



HURST

BOILER & WELDING CO., INC.

HURST SERIES FEEDMISER

BOILER FEEDWATER SYSTEMS

Feedwater Pump Station / Condensate Return

OPEN VENT DESIGN

30 to 1000 Gallon Tank Capacity
Optional Steam Pre-Heater

**FOR ALL TYPES OF
STEAM BOILERS WITH
PRESSURES TO 300 PSIG**

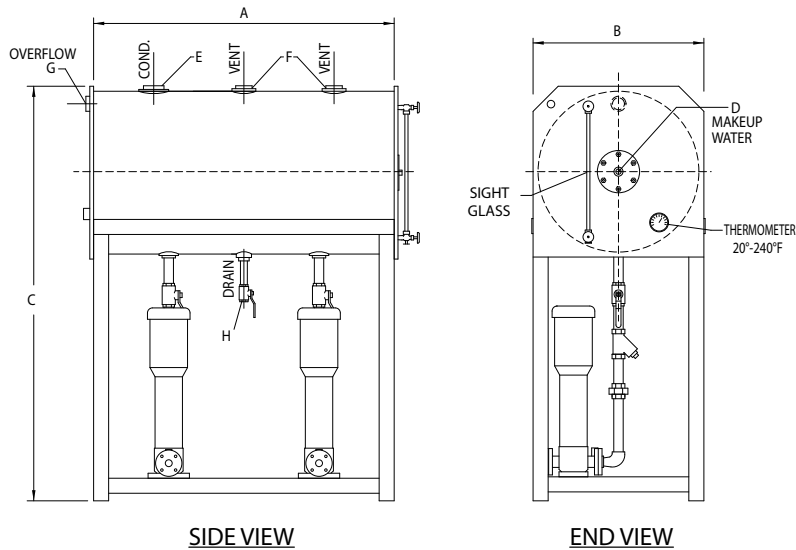
Expect decades of service with this all steel construction featuring a 3/16" thick rolled tank supported by a robust structural pump station.

**SKID MOUNTED
MODULAR PACKAGED**



HURST PERFORMANCE SERIES BOILERS

HURST PERFORMANCE SERIES BOILERS



STANDARD TRIM EQUIPMENT

- Automatic, internal float valve.
- Water gauge glass set w/ brass cock valves.
- Feedwater thermometer.

OPTIONAL TRIM EQUIPMENT

- Primary and secondary feedwater pumps.
- Pump suction piping, valves, strainers and drain.
- Control panel with motor starters & circuit breakers.
- Pump function lights, selector switches.
- Diffuser tube for high temperature condensate return.
- High and low water level alarms.
- Magnesium anti-corrosion probe rods.
- Manhole access (200 gallon & larger).
- Electric solenoid valve makeup water assembly.
- Automated steam heater (pre-heat feedwater).

STANDARD FEATURES

Expect decades of service with this all steel construction featuring a 3/16" thick rolled tank supported by a robust structural pump station. All Hurst Feedmiser units are designed to accommodate the NPSH requirements of the pump manufacturer to insure maximum pump efficiency. Factory packaged with optional operating controls, pumps and piping. Installation is made simple in that only service connections are needed.

SPECIFICATIONS

BOILER HP	TANK CAPACITY (GAL)	(A) LENGTH	(B) WIDTH	* (C) HEIGHT	** (D) WATER SUPPLY	(E) COND. RETURN	(F) VENT	(G) OVER FLOW	(H) DRAIN	*** 150 PSIG WEIGHT
15-30	30	30	19	60	1/2	2	2	1 1/2	3/4	625
40-60	60	36	25	67	3/4	2	1 1/2	1 1/4	3/4	800
70-80	80	46	24	66 1/4	3/4	2	1 1/2	1 1/4	3/4	825
100	100	48	26	74	3/4	2	1 1/2	1 1/4	3/4	1000
125-150	150	48	31 1/4	79 1/4	3/4	2	1 1/2	2	1	1100
200	200	60	34	88	3/4	2 1/2	1 1/2	2	1	1385
250	250	72	34 1/2	88 1/2	3/4	2 1/2	1 1/2	2	1	1500
300	300	72	38	92	3/4	2 1/2	2	2	1	1730
350	350	84	38	92	3/4	2 1/2	2 1/2	2	1	1835
400	400	72	44	98	3/4	3	2 1/2	2	1 1/4	1950
500	500	84	44	104	3/4	3	2 1/2	2	1 1/4	2035
600	600	84	48	108	3/4	3	2 1/2	2	1 1/4	2300
700-800	800	114	48	120	3/4	3	2 1/2	2	1 1/4	2940
900-1000	1000	96	58	130	(2) 3/4	3	3	3	1 1/2	4200

* OVERALL HEIGHT (C) MAY CHANGE DEPENDING ON (NPSH) REQ'TS OF PUMP SELECTED.

** CUSTOMER INCOMING SUPPLY PRESSURE TO BE LESS THAN 40 PSIG.

*** OTHER WEIGHTS AVAILABLE UPON REQUEST.

NOTE: 30 GALLON TANK HAS SINGLE VENT. CONSULT FACTORY FOR SIZES OVER 1000 BHP.

ALL DIMENSIONS ARE IN INCHES.
CERTIFIED DRAWING AVAILABLE UPON REQUEST.
DIMENSIONS SUBJECT TO CHANGE WITHOUT NOTICE.

HBC-09516
06/2020



 hurstboiler.com

HURST BOILER

100 Boilermaker Lane • Coolidge, GA 31738-3765

Tel: (229) 346-3545 • Fax (229) 346-3874

email: info@hurstboiler.com

